



BUSHING TYPE CURRENT TRANSFORMER FOR INDOOR INSTALLATION FOR VOLTAGE LEVEL 0.72 kV – 36 kV TYPE TPP



DESCRIPTION

- Bushing current instrument transformers type TPP are manufactured as transformers with double ratio secondary and transformers with single ratio secondary. Rated primary currents of single ratio transformers 600 – 3000 A, but for double ratio transformers the rated primary currents are in the range from (2 x 600) up to (2 x 1500) A. Rated secondary current is 5 A.
- The active parts, primary and secondary windings, are wound round the small length magnetic core. They are cast with synthetic resin, which serves as insulation, as well as the transformers body. By application of the synthetic resins and high quality magnetic sheets of grain oriented structure, a current transformer of high electrical and mechanical characteristics was manufactured. The current transformers type TPP are available in two models:
 - model I –with one core
 - model II – with one and two cores respectively.

TO SPECIFY FOR AN ORDER

- Rated net voltage
- Rated frequency
- Rated primary and secondary current
- Rated short time thermal current (I_{th})
- Rated continuous thermal current (I_{cth})
- Rated dynamic current (I_{dyn})
- Rated output/Accuracy class/Security factor SF (measurement)
- Rated output/Accuracy class/Accuracy limiting factor (protection)
- Ambient temperature
- Altitude
- Standard

UPON A SPECIAL REQUEST

- Special design
- Rated secondary current 1A

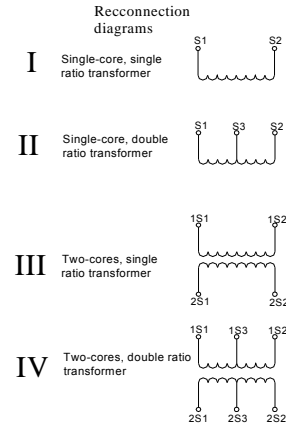
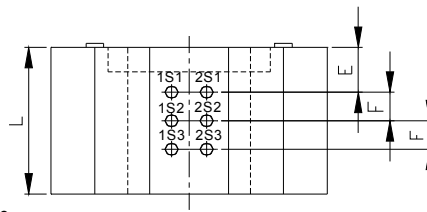
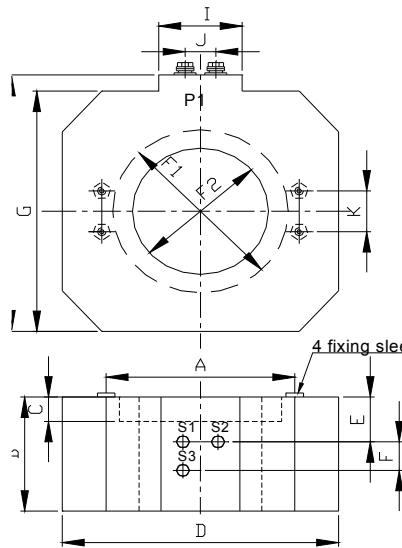
STANDARDS

Current instrument transformers type TPP are in accordance with IEC, JUS, ANSI, BS or some other international standards upon request.

APPLICATION

Current instrument transformers type TPP are intended for the mounting on a full insulated conductor and with the mounting on the suitable insulator they are installed into electrical switchgears of indoor mounting, up to 38 kV. They are intended for supply of ammeters, current circuits of meters, protective and other devices.

TECHNICAL CHARACTERISTICS



MODEL	RATED PRIMARY CURRENT (A)	RATED OUTPUT (VA)	SECURITY FACTOR OR ACCURACY LIMITING FACTOR		RATED ACCURACY CLASS
			Single ratio	Double ratio	
I	600	15 ; 30 ; 45 ; 60	FS5		0,5 ; 1 ; 3
	600	15 ; 30 ; 45	FS10	10P5 ; FS10	0,5 ; 1 ; 3
	600	15 ; 30	10P5 ; 10P10	10P5 ; FS10	0,5 ; 1 ; 3
	up to 800	15 ; 30 ; 45 ; 60	FS5 ; FS10	10P5 ; FS10	0,5 ; 1 ; 3
	up to 800	15 ; 30	10P5 ; 10P10	10P5 ; FS10	0,5 ; 1 ; 3
	up to 1000	15 ; 30 ; 45 ; 60	FS5 ; FS10 ; 10P5 ; 10P10	10P5 ; FS10	0,5 ; 1 ; 3
	up to 1000	15 ; 30 ; 45 ; 60	FS5 ; FS10 ; 10P5 ; 10P10	10P5 ; FS10	0,5 ; 1 ; 3

MODEL	RATED PRIMARY CURRENT (A)	SINGLE RATIO TRANSFORMERS						DOUBLE RATIO TRANSFORMERS					
		MEASURING CORE			PROTECTIVE CORE			MEASURING CORE			PROTECTIVE CORE		
		Rated output	Rated accuracy class	Security factor	Rated output	Rated accuracy class	Accuracy limiting factor	Rated output	Rated accuracy class	Security factor	Rated output	Rated accuracy class	Accuracy limiting factor
II	600	15 ; 30	0,5 ; 1	FS5	15;30;45	1;3	10P5	15	0,5;1	FS10	15;30;45	1;3	10P5
		15 ; 30	0,5 ; 1	FS10	15;30	1;3	10P10	30			15;30		10P10
	600 up to 800	15 ; 30	0,5 ; 1	FS5	15;30;45	1;3	10P5	15	0,5;1	FS10	15;30;45;60	1;3	10P5
		15 ; 30	0,5 ; 1	FS10	15;30	1;3	10P10	30			15;30		10P10
	800 up to 1000	15;30;45	0,5 ; 1	FS5	15;30;45;60	1;3	10P5	15	0,5;1	FS10	15;30;45;60	1;3	10P5
		15 ; 30	0,5 ; 1	FS10	15;30;45	1;3	10P10	30			15;30		10P10
	1000 up to 3000	15;30;45	0,5 ; 1	FS5	15;30;45;60	1;3	10P5	15	0,5;1	FS10	15;30;45;60	1;3	10P5
		15 ; 30	0,5 ; 1	FS10	15;30;45	1;3	10P10	30			15;30;45		10P10

Dimensions (mm)											
A	B	C	D	E	F	G	H	I	J	K	L
160	100	20	230	40	25	210	225	65	25	32	130

Note: All data contained herewith are to be considered as information only.
 The manufacturer reserves all rights for changes for the purpose of technical improvement.
 A list of guaranteed values with dimension drawing attached should be submitted upon customer's request.

Bosnia and Herzegovina – Republic of Srpska, 71123 I. Sarajevo, Vuka Karadžića 17.

Switchboard: +387 57 342 180, General Manager: +387 57 342 549, 343 354, Commercial director: +387 57 340 353, 342 326

Telefax: +387 57 340 357, 340 356, e-mail: office@e-raop.com

