



CURRENT TRANSFORMER WITH OIL INSULATION FOR VOLTAGE LEVEL 24 kV - 36 kV TYPE TE



DESCRIPTION

- Current transformer, type TE 7/8 is designed as primary double ratio in transmission ratio 1:2, or single ratio, but type TE 7C as single ratio one.
- Insulation of this transformer is performed in oil-paper insulation technique. Active parts i.e. magnetic core and windings are placed into porcelain insulator and sealed by transformer oil. Insulator is fitted on metal base, where a connecting box with secondary endings and earthing valve are placed, too. A transformer head with both primary endings is fixed on the top of insulator.
- High service reliability obtained by a successful solution of:
 - high voltage insulation
 - heating at rated primary current and required current of extended range
 - withstanding of short-circuit currents and over-voltages
- Reliable protection against permanent atmosphere effects on the insulation is realized by a completely sealed construction
- Magnetic core is made of high quality materials.
- Oil level indicator

STANDARDS

Current instrument transformers are designed according to IEC, JUS, ANSI and BS standards, or some other upon request.

APPLICATION

Outdoor current measuring transformer, type TE is used for protection of measuring and safety devices against high voltage, as well as for measuring current transformation to a level appropriate for mentioned devices.

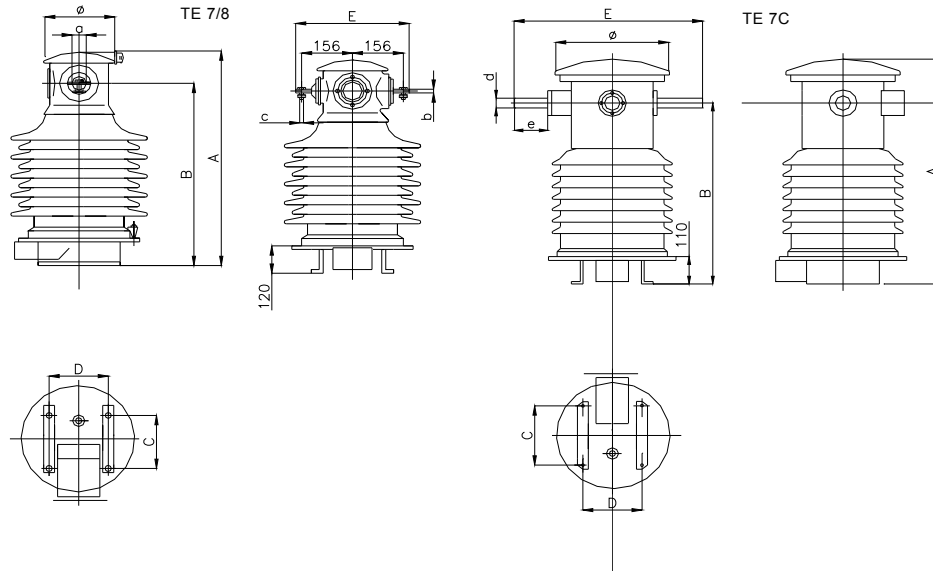
TO SPECIFY FOR AN ORDER

- Rated net voltage
- Rated frequency
- Rated primary and secondary current
- Rated short-term thermal current (I_{th})
- Rated continuous thermal current (I_{cth})
- Rated dynamic current (I_{dyn})
- Rated output/accuracy class/safety factor SF (measurement)
- Rated output/accuracy class/accuracy limiting factor (protection)
- Ambient temperature
- Creepage distance
- Altitude
- Standard

UPON A SPECIAL REQUEST

- Insulators with prolonged creepage distance
- Rated thermal current higher than the specified one
- Non standard primary terminals
- Ratio changing by secondary tapings

TECHNICAL CHARACTERISTICS



Type	Unit	TE 7/8	TE 7C
Highest voltage for equipment	kV	38	38
One minute withstand voltage industrial frequency	kV	70	70
Impulse withstand voltage 1,2/50 μ s, (peak)	kV	170	170
Rated frequency	Hz	50 or 60	
Flashover distance (min)	mm	390 ± 7	380 ± 6
Insulator creepage distance	mm	730 ± 15 or 1080 ± 15	660 ± 10 or 1080 ± 15
Rated primary current I_n to	A	2x300; 600	1600
Rated secondary current	A	5 or 1	
Rated short-term thermal current $I_{th}/1s$	kA	$I_{th} = 80 I_n - (\max 24 \text{ kA})$	$I_{th} = 80 I_n - (\max 40 \text{ kA})$
Rated output	% I_n	120 or upon request	
Rated dynamic current I_{dyn}	kA	2,5 $I_{th} - (\max 60 \text{ kA})$	2,5 $I_{th} - (\max 100 \text{ kA})$
Rated output	VA	10 - 75	
Accuracy class / Safety factor (SF)		For measurement:	0,2 - 0,5 - 1 / FS= 5 - 10
Accuracy class / Accuracy limiting factor		For protection:	5P - 10P / 5 - 10 - 15 - 20 - 30
Number of cores		3	3
Dimension	A	mm	760 ± 7
	B	mm	650 ± 7
	C x D	mm	264 x 264
	E	mm	352
	\varnothing	mm	220
Primary terminals	a	mm	40 or 30
	b	mm	12
	c	mm	M 16 or M 10
	$\varnothing d \times e$	mm	$\varnothing 40 \times 125$ or upon request
Total mass – (approximately)	Kg	90	115
Oil – (approximately)	Lit	25	45

Note:

All data contained herewith are to be considered as information only.

The Manufacturer reserves all rights for changes for the purpose of technical improvement.

A list of guaranteed values with dimension drawing attached should be submitted upon Customer's request.

Bosnia and Herzegovina- Republic of Srpska, 71123 I. Sarajevo, Vuka Karadžića 17

Switchboard: +387 57 342 180, General Manager:+387 57 342 549, 343 354, Commercial Director +387 57 340 353, 342 326

Telefax: +387 (0) 57 340 357, 340 356, e-mail: office@e-raop.com

