



### CABLE MOUNTED BUS TYPE TRANSFORMER FOR VOLTAGE LEVEL OF 0.72 kV TYPE KOT-01



#### DESCRIPTION

The transformer is of toroidal shape, made of high quality magnetic material with a crystal oriented structure. The core with winding and terminals is cast with epoxy resin which serves as insulation and housing of the transformer. The split core can be easily mounted on the cable without dismantling the cable-end box. Transformers halves are mutually fixed with special screws.

#### STANDARDS

Cable mounted bus type transformers are in accordance with IEC, JUS, ANSI, BS or some other standards upon request.

#### APPLICATION

The type KOT-01 cable mounted bus type transformer is intended for:

- directed earth fault protection, type IHS-1S,
- non-directed earth fault protection for protection of lines type INH-000S,

- protection of resistors in transformer neutral at high-Ohmic errors, type SHR, manufactured by "Energoinvest".

For connection of earth fault protection with overhead lines, usually three current transformers connected in parallel are used ( Figure 1. ).

However, with three-phase cables or three single-core cables, a cable mounted bus type transformer with only one magnetic core and a secondary winding can be used ( Figure 2. )

The cable and sheath make a primary conductor with necessary insulation. With cable mounted transformer, current will flow through the secondary winding only if earth fault current flows through the cable. There is no possibility for faulty operation of earth fault protection during short-circuits in other parts of the network. Besides, the relay operating current is completely independent of the load current in the cable.

#### TO SPECIFY FOR AN ORDER

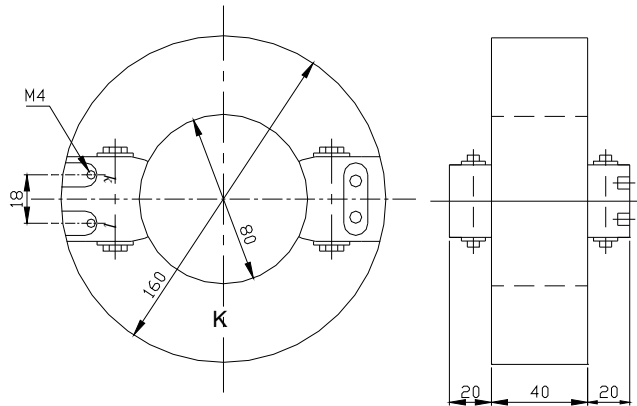
- Rated net voltage
- Rated frequency
- Rated primary and secondary current
- Rated short-time thermal current ( $I_{th}$ )
- Rated continuous thermal current ( $I_{cth}$ )
- Rated dynamic current ( $I_{dyn}$ )
- Rated output / Accuracy class / Security factor SF (measurement)
- Rated output/ Accuracy class /Accuracy limiting factor (protection)
- Ambient temperature
- Altitude
- Standard

#### UPON SPECIAL REQUEST

- Non-standard ratio

# TECHNICAL CHARACTERISTICS

KOT-01



Type	Measure unit	KOT-01
Highest voltage for equipment	kV	0,72
Rated withstand short-time frequency voltage	kV	3
Rated primary current	A	100
Rated frequency	Hz	50 or 60
Rated secondary current	A	1
Rated output	VA	2,5
Cable hole Ø	mm	80
Suitable for relays		IHS-1S; SHR; INH-000S
Minimum primary current of protection operation:	A	1,3 for IHS-1S
	A	1,3 for SHR
	A	10 for INH-000S
Mass	kg	2,5

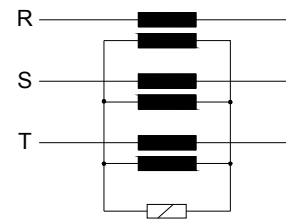


Figure 1 application with overhead lines

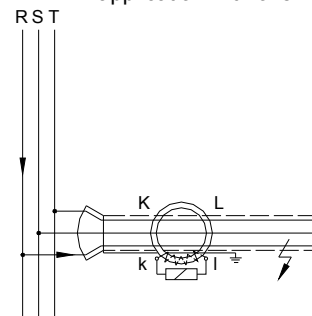


Figure 2 application with three-phase cables or three single-core cables

Note: All data contained herewith are to be considered as information only. The manufacturer reserves all rights for changes for the purpose of technical improvement. A list of guaranteed values with dimension drawing attached should be submitted upon Customer's request.